



UCS Quasar Chain Winder Range

The UCS Quasar Chain Winder Range encompasses the 24V Quasar Chain Winder and the 24V Quasar Synchro Chain Winder.

Quasar Chain Winder

This heavy duty chain winder features a strong stainless steel, double link chain that exits from the centre of the casing with a maximum stroke of 500mm.

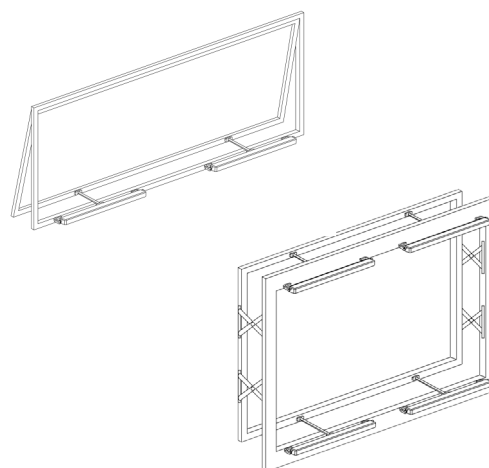
- The Quasar chain actuator is housed in a narrow line section 47 mm x 32 mm.
- The chain winder comes with 1.5 m of cable and pivot brackets as standard.
- Suitable for installation on Smoke and Heat Extraction Systems.
- It can be operated by the occupant using a simple wall mounted switch, any of the Arens Ventilation Control Panels or Building Management System.
- Available in light grey powdercoat finish – with black and white available on a special indent.

If window width is between 1200mm – 4800mm wide two or more UCS Quasar Synchro Chain actuators should be used to avoid twisting of the frame and to comply with manufacturer recommendations.


Quasar Synchro Chain Winder

- Synchro version is equipped with an integrated speed synchronisation control board that allows the mounting a maximum of 4 synchro Quasars on a sash.
- Should one winder stop all other synchronised winders stop immediately to ensure there is no twisting of the window.

Alternatively, the Vega Synchro Chain Winder is also appropriate for windows greater than 1200mm wide.



Option

The Quasar DC F-Signal is available with open and closed feedback signals (free potential, maintained contact), activated by the current limit 

Quasar BMSline PLUS

- Supplied with a 3M eight wire cable (voltage supply, synchronisation, local switch)
- Preinstalled connector on the external side of the actuator for the connection to the setup kit

Quasar BMSline ADV

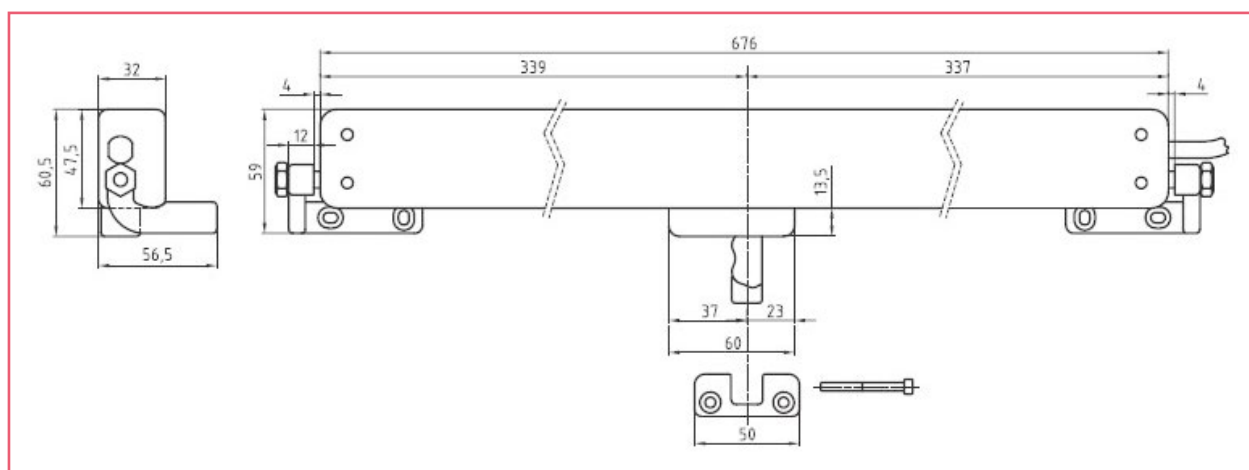
- Supplied with no power cable and no data cable
- The installer unscrewing the cover on the top of the actuator, can choose how many wires he needs for the application and the correct connection to the electronic board



Technical Specifications

	Quasar	Synchro Quasar	Quasar BMSline PLUS	Quasar BMSline ADV
Voltage	24 VDC \pm 10%	24 VDC \pm 10%	24 VDC \pm 10%	24 VDC \pm 10%
Electrical connection	DC 2 Wire	DC 5 wire		
Operation	Polarity inversion	Polarity inversion	Polarity inversion or local switch	Programmable
Stroke	500 mm	500 mm	500 mm	500 mm
Force	300 N	300 N	300 N	300 N
Speed	~15 mm/s	~15 mm/s	~15 mm/s	~15 mm/s
Max. current absorption	0.9 A	0.9 A	0.9 A	0.9 A
Parallel connection	Yes	Yes	Yes	Yes
Limit stop	Electronic	Electronic	Electronic	Electronic
Safety stop	Electronic	Electronic	Electronic	Electronic
Protection class	IP 40	IP 30	IP 30	IP 30

Dimensions



Application

- Ideal for domestic and commercial use
- May be used on windows of any level or in banks of windows
- When required chains may be shortened to meet Australian safety standards
- Integrates with all Arens Ventilation Controllers
- Support for C-Bus and other Building Management Systems

Part No.

	ASG	Black	White
UCS Quasar Chain Winder	07/51-20450ASG	07/51-20450BLK	07/51-20450WHT
UCS Synchro Quasar Chain Winder	07/51-20650ASG	07/51-20650BLK	07/51-20650WHT
UCS Quasar BMSline PLUS Chain Winder	07/51-21450ASG	07/51-21450BLK	07/51-21450WHT
UCS Quasar BMSline ADV Chain Winder	07/51-22450ASG	07/51-22450BLK	07/51-22450WHT